

# Are you in a situation of harassment at work?

We are committed to helping you

## What you need to know

Support is here. Consult the Harassment Centre of Expertise (HCE) for advice and guidance: NA-HarassmentComplaint-PlainteHarcelement-GD@hrsdc-rhdcc.gc.ca, and visit the <http://iservice.prv/harassment>

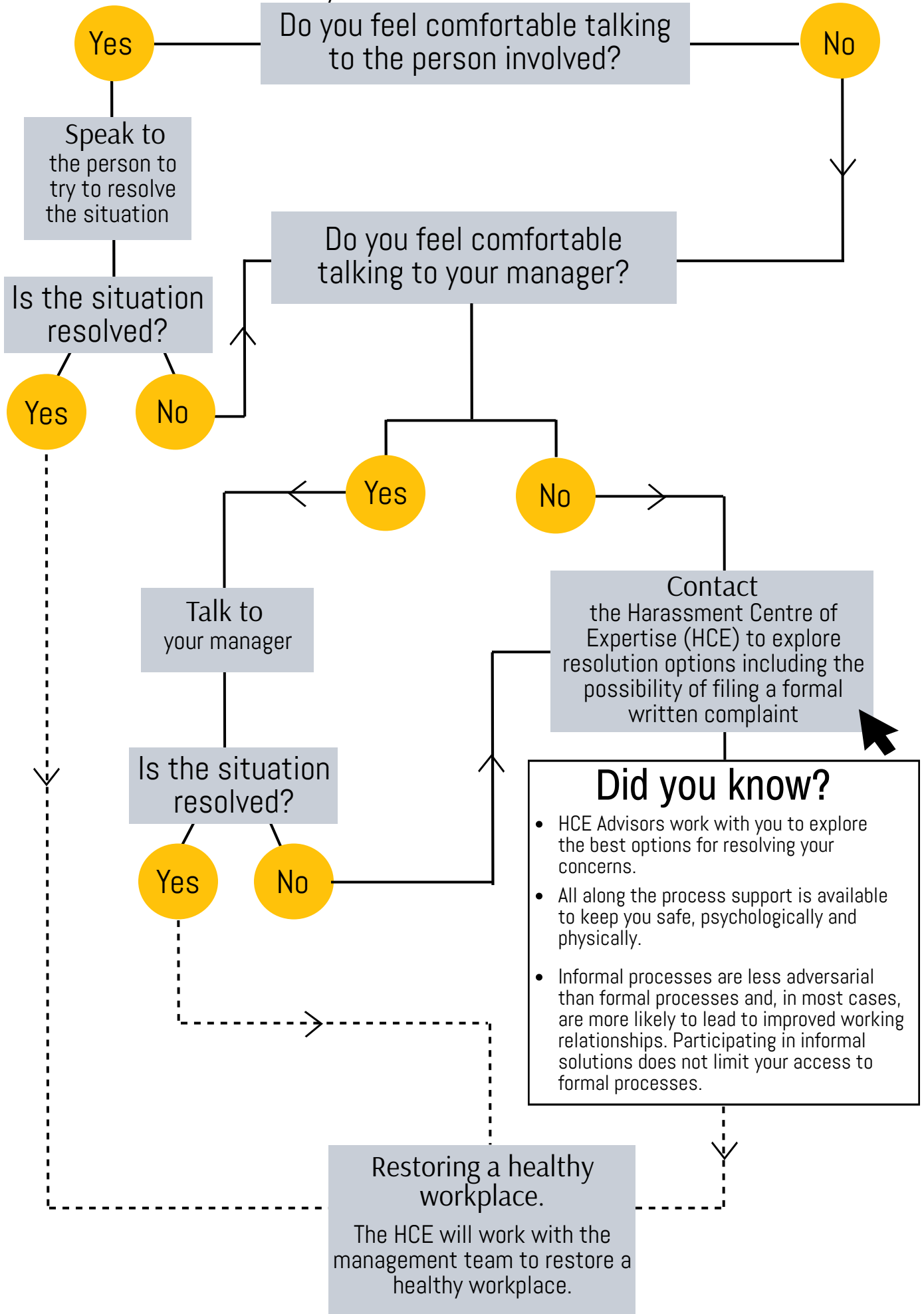
The Employee Assistance Program is available 24/7.

Union representatives are available to help you.

Management is committed to protect you against reprisal.



## How you can resolve the situation



## Important

We all play an important role in maintaining a respectful workplace. Speak up and reach out for help early.

## Resources

Click below to access these resources:



Training



Informal Conflict Management



Conflict Resolution



Values and Ethics



Harassment Centre of Expertise



Employee Assistance Program (EAP)



Mental Health in the Workplace



Union Representatives