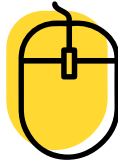


# TOP HR CLICKS FOR MANAGERS



## LEARNING



Access ESDC's learning options through [ILMS/Saba](#)

Common learning for the federal public servants is available through the Canada School of Public Service's [GCCampus](#)

## MENTORING

Want to learn more about [Mentoring](#)? Check it out!

## OFFICIAL LANGUAGES

Here's the [Official Languages Manager's Toolkit](#)

## DUTY TO ACCOMMODATE

Need to respond to a [Duty to Accommodate](#) request? Visit their page!

## WORKPLACE HEALTH AND SAFETY



All resources on:  
[Occupational Health and Safety](#)  
[Mental Health in the Workplace](#)

## OFFICE OF INFORMAL CONFLICT MANAGEMENT

Your first contact:  
[Office of Informal Conflict Management](#)  
Other resources:  
[Conflict Resolution](#)  
[Employee Assistance Program Services](#)  
[Specialized Organizational Services](#)

## HARASSMENT PREVENTION

For details concerning the process and the steps, consult [Harassment Prevention](#)

## VALUES & ETHICS

[Values & Ethics](#)

## PLAN

Get familiar with the steps involved in [Workforce Planning](#)

## PERFORMANCE MANAGEMENT

Check out the [Performance Management](#) page for all tools on PAs.

Other resources:  
[Talent Management](#)  
[TBS Application Portal](#)

## RECOGNITION



Ways to provide [Recognition](#) to your employees

## LABOUR RELATIONS

[Labour Relations](#)

## PAY



Your resources:  
[Phoenix Pay Centre](#)  
[Help chart](#) if you need help

## HRSC

Visit the [Human Resources Service Centre \(HRSC\)](#) to submit your HR service requests including:  
[Classification](#), [Staffing](#), or any other [General HR Enquiries](#)

## LEAVE

Your resource: [MyEMS \(PeopleSoft\)](#)

## MANAGER'S GUIDE TO HR

Have questions on a staffing action? The [Manager's HR Guide](#) outlines the most important details when moving forward with staffing and pay residual activities!  
Other Resource: [Staffing Direction](#)

Don't forget to check out the latest [HR info RH!](#)  
For all other HR services, have a look at our [Catalogue!](#)